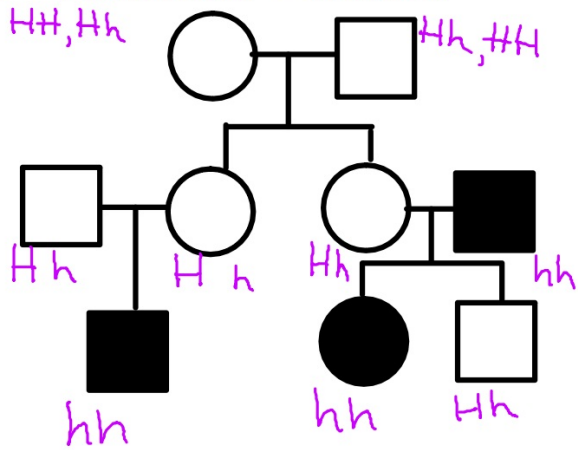
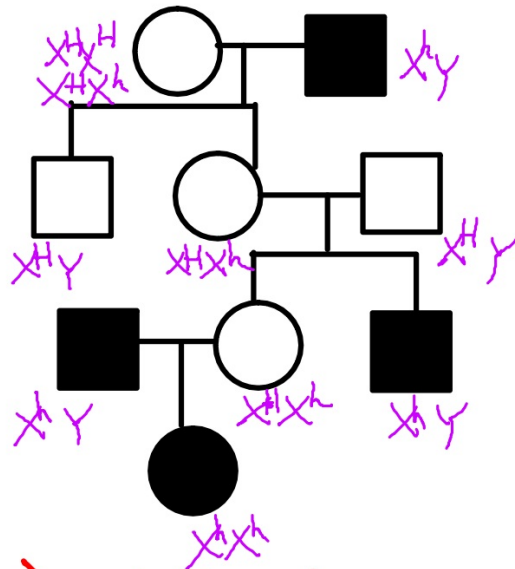


Warm-up

$HH, Hh = \text{regular}$   
 $hh = \text{hitch hiker} = \text{shaded}$



$X^H = \text{healthy}$   
 $X^h = \text{hemophilia} = \text{shaded}$



- 1) write sex chromosomes
- 2) determine male genotype
- 3) Homozy. recessive female genotype
- 4) others